



INDOFINE Chemical Company, Inc.

121 Stryker Lane, Bldg. 30, Suite 1 • Hillsborough, NJ 08844 • U.S.A.

Phone: (908) 359-6778 • FAX: (908) 359-1179

website: www.indofinechemical.com

e-mail: chemical@indofinechemical.com

CERTIFICATE OF ANALYSIS

Catalog Number: 020619

Product Name: **GELSEMINE**

CAS Number: [509-15-9]

Lot Number: 2402906

Chemical Formula: $C_{20}H_{22}N_2O_2$

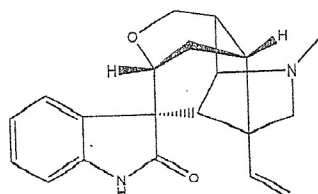
Molecular Weight: 322.41

Appearance: Off-white powder

Water Content: 0.4%

Storage: Store in a cool, dry place. Protect from light.

Purity(HPLC): 99.0%



Prepared by:
Ramesh Mandadi
Ramesh Mandadi
Director of Operations

Reviewed and Approved by:
Sujata Moton
Sujata Moton
VP



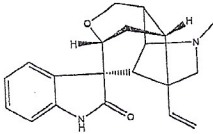
INDOFINE Chemical Company, Inc.

121 Stryker Lane, Bldg. 30, Suite 1 • Hillsborough, NJ 08844 • U.S.A.

Phone: (908) 359-6778 • FAX: (908) 359-1179

website: www.indofinechemical.com

e-mail: chemical@indofinechemical.com



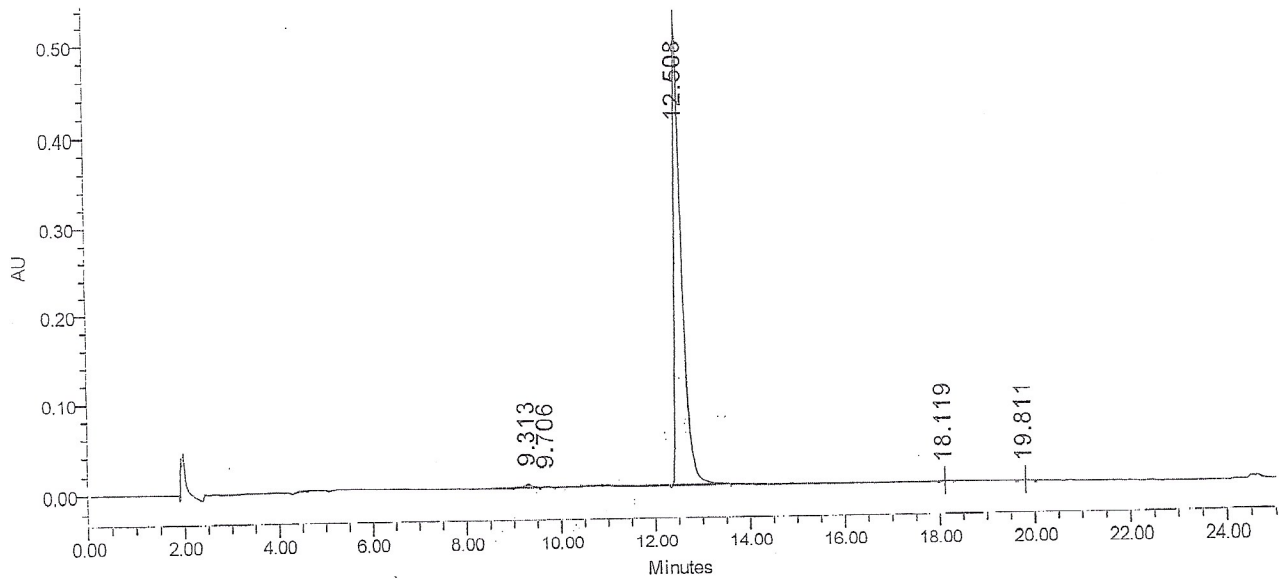
HPLC ANALYSIS

Catalog No.: 020619
Product Name: Gelsemine
Lot No.: 2402906

SAMPLE INFORMATION

Sample Name: Gelsemine
Sample Type: Unknown
Vial: 29, 53
Injection #: 1
Injection Volume: 10.00 ul
Run Time: 25.0 Minutes

Acquired By:
Sample Set Name
Acq. Method Set: Gelsemine
Processing Method: sample
Channel Name: PDA Ch1 252nm@4.8nm
Proc. Chnl. Descr.: PDA Ch1 252nm@4.8nm



Peak Results

Name	RT	Area	% Area	Height (µV)	USP Plate Count	USP Resolution
1	9.313	36672	0.64	2844	12083.21	
2	9.706	3418	0.06	371	23671.29	1.29
3	12.508	5711473	99.02	519572	31799.86	10.09
4	18.119	8068	0.14	1009	114630.31	21.99
5	19.811	8582	0.15	1013	158282.52	7.64
6						